

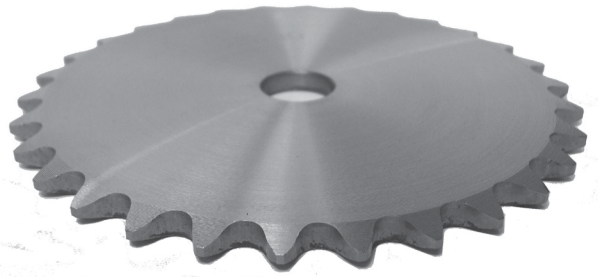
NO. 35 ROLLER CHAIN SPROCKETS

0.375" Pitch

Without Hub

Minimum Plain Bore

Steel



Part Number	Type	No. of Teeth	Outside Diameter (in)	Stock Bore (in)	Maximum Bore (in)	Overall Length (in)
35A15	A	15	1.990"	0.500"	1.500"	0.168"
35A16	A	16	2.110"	0.500"	1.500"	0.168"
35A17	A	17	2.230"	0.500"	1.750"	0.168"
35A18	A	18	2.350"	0.500"	1.750"	0.168"
35A19	A	19	2.470"	0.500"	2.000"	0.168"
35A20	A	20	2.590"	0.500"	2.000"	0.168"
35A21	A	21	2.710"	0.500"	2.000"	0.168"
35A22	A	22	2.830"	0.500"	2.500"	0.168"
35A23	A	23	2.950"	0.500"	2.500"	0.168"
35A24	A	24	3.070"	0.500"	2.500"	0.168"
35A25	A	25	3.190"	0.500"	2.750"	0.168"
35A26	A	26	3.310"	0.500"	2.750"	0.168"
35A27	A	27	3.430"	0.500"	2.750"	0.168"
35A28	A	28	3.550"	0.500"	3.000"	0.168"
35A30	A	30	3.790"	0.500"	3.000"	0.168"
35A32	A	32	4.030"	0.500"	3.500"	0.168"
35A35	A	35	4.390"	0.625"	3.500"	0.168"
35A36	A	36	4.510"	0.625"	3.500"	0.168"
35A40	A	40	4.990"	0.625"	4.000"	0.168"
35A42	A	42	5.230"	0.625"	4.000"	0.168"
35A45	A	45	5.590"	0.625"	4.500"	0.168"
35A48	A	48	5.950"	0.625"	4.500"	0.168"
35A54	A	54	6.660"	0.625"	5.000"	0.168"
35A60	A	60	7.380"	0.750"	6.000"	0.168"
35A70	A	70	8.580"	0.750"	7.000"	0.168"
35A72	A	72	8.810"	0.750"	7.000"	0.168"
35A80	A	80	9.770"	0.750"	8.000"	0.168"
35A84	A	84	10.250"	0.750"	9.000"	0.168"
35A96	A	96	11.680"	0.750"	10.000"	0.168"
35A112	A	112	13.590"	0.750"	12.000"	0.168"

Roller Chain Sprockets

Roller chain sprocket part numbers can be determined as follows:

Chain + (A for Hubless or B for Hub) + Number of Teeth

For example: 35A112 = 35 Chain + A for Hubless + 112 Teeth